

# COVID Data

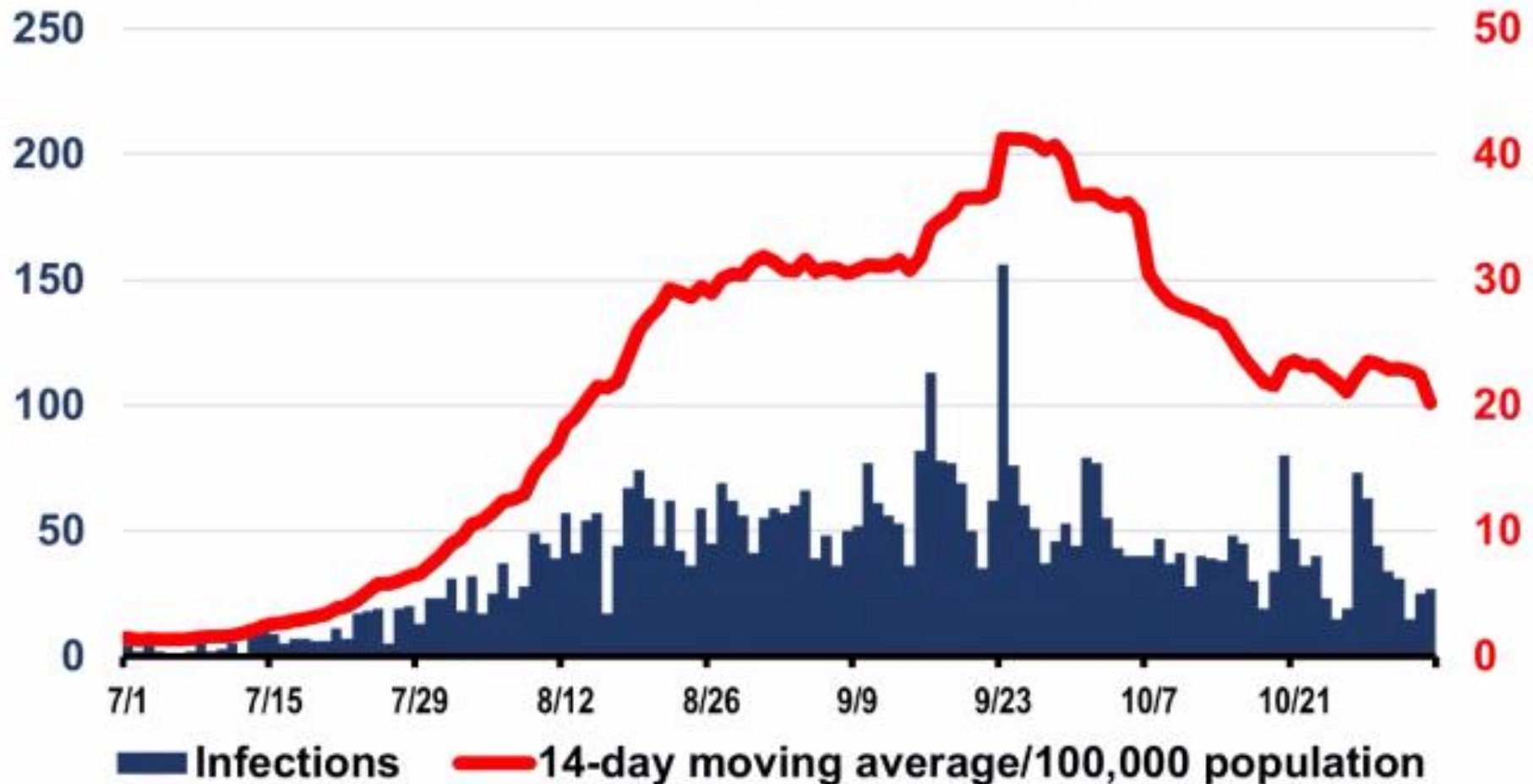
November 5, 2021

# Scott County Data

# Infections and 14-day moving average

SCHD 1 Jul-3 Nov 2021

Cumulative infections (incl. epi-linked) = 26,143



# Infections and 14-day moving average

SCHD 1 July-27 Oct 2021

Cumulative infections = 25,904

7-day test positive rate = 8.6%

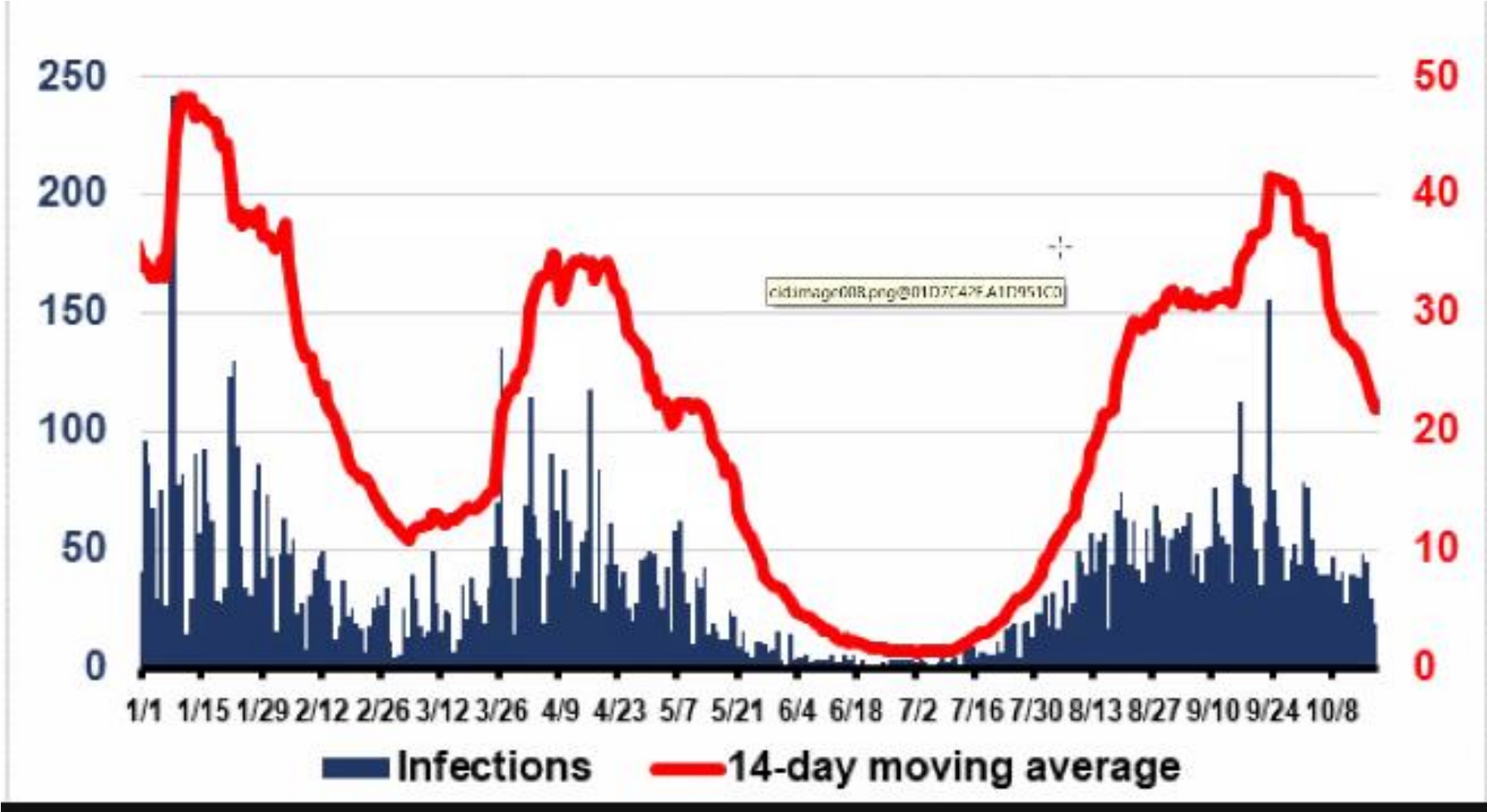


■ Infections

— 14-day moving average/100,000 population

# Infections and 14-day Moving Average

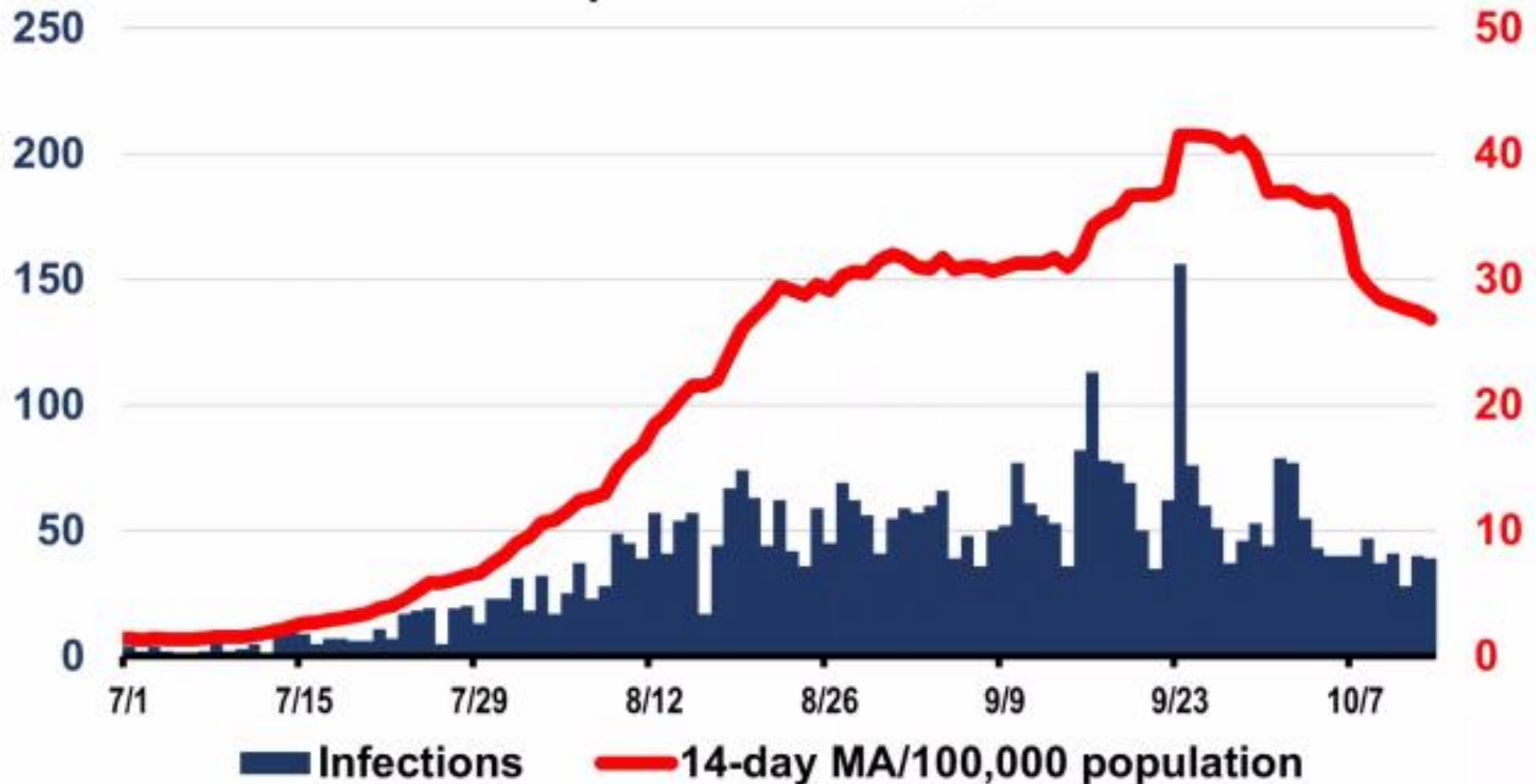
Jan 1, 2021 – Oct 20, 2021



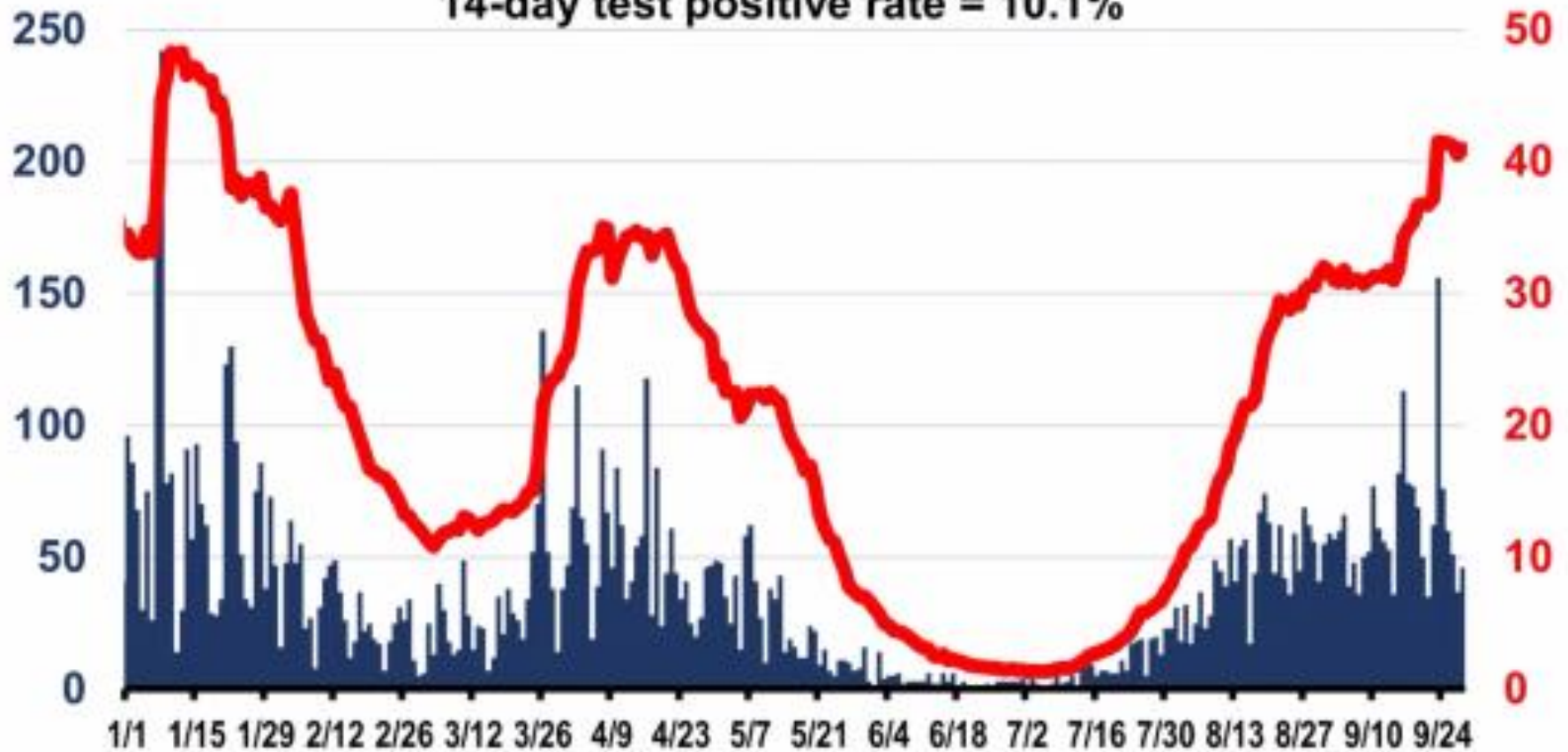
# Infections and 14-day moving average

SCHD 1 Jul-13 Oct 2021

Cumulative infections = 25,357 (incl. epi-linked) 7-day test positive rate = 7.8%



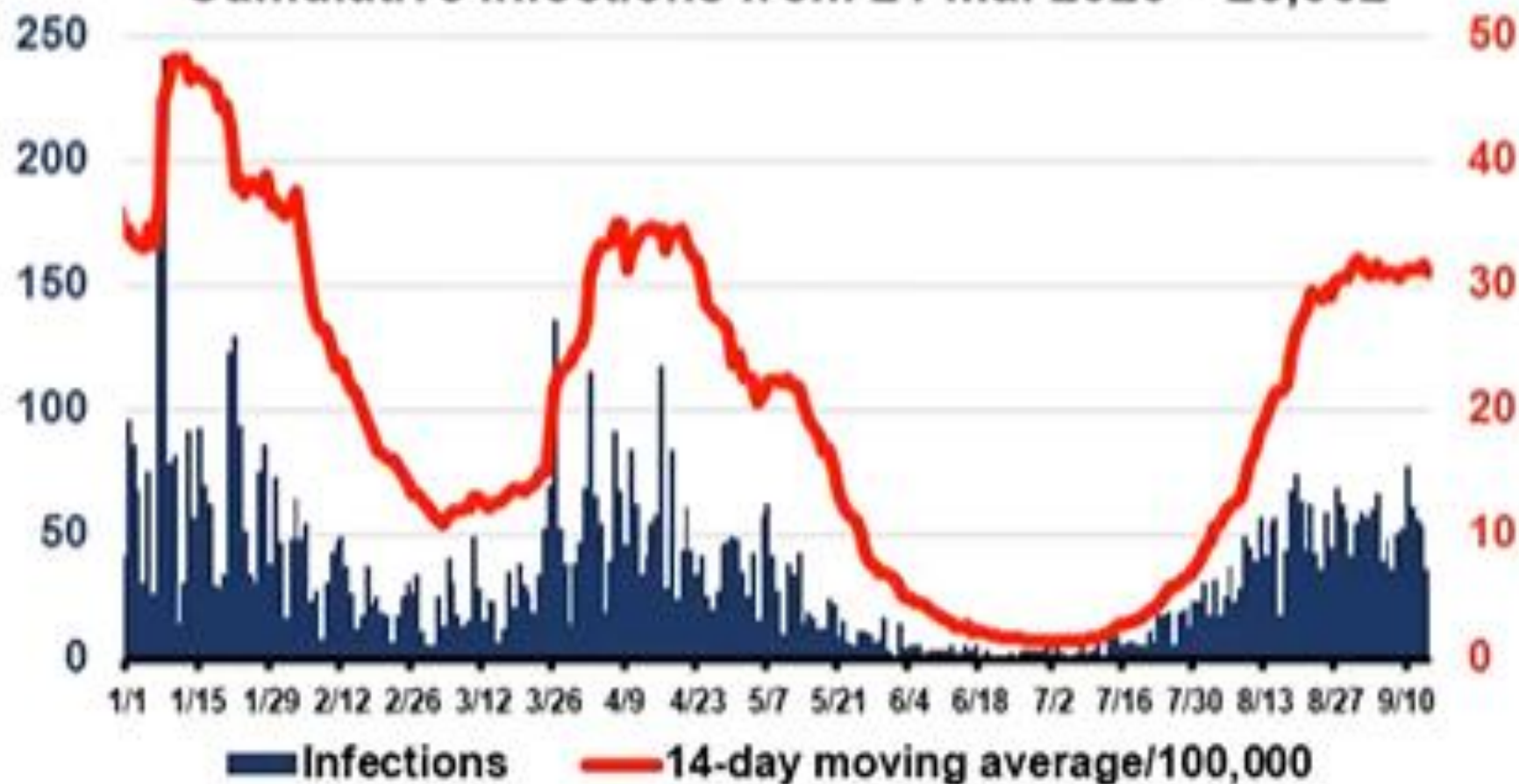
**Infections and 14-day moving average**  
**SCHD 1 Jan-29 Sep 2021**  
Cumulative infections (incl. epi-linked) = 24,654  
14-day test positive rate = 10.1%



# Infections and 14-day moving average

SCHD 1 Jan-14 Sep 2021

Cumulative infections from 21 Mar 2020 = 23,662

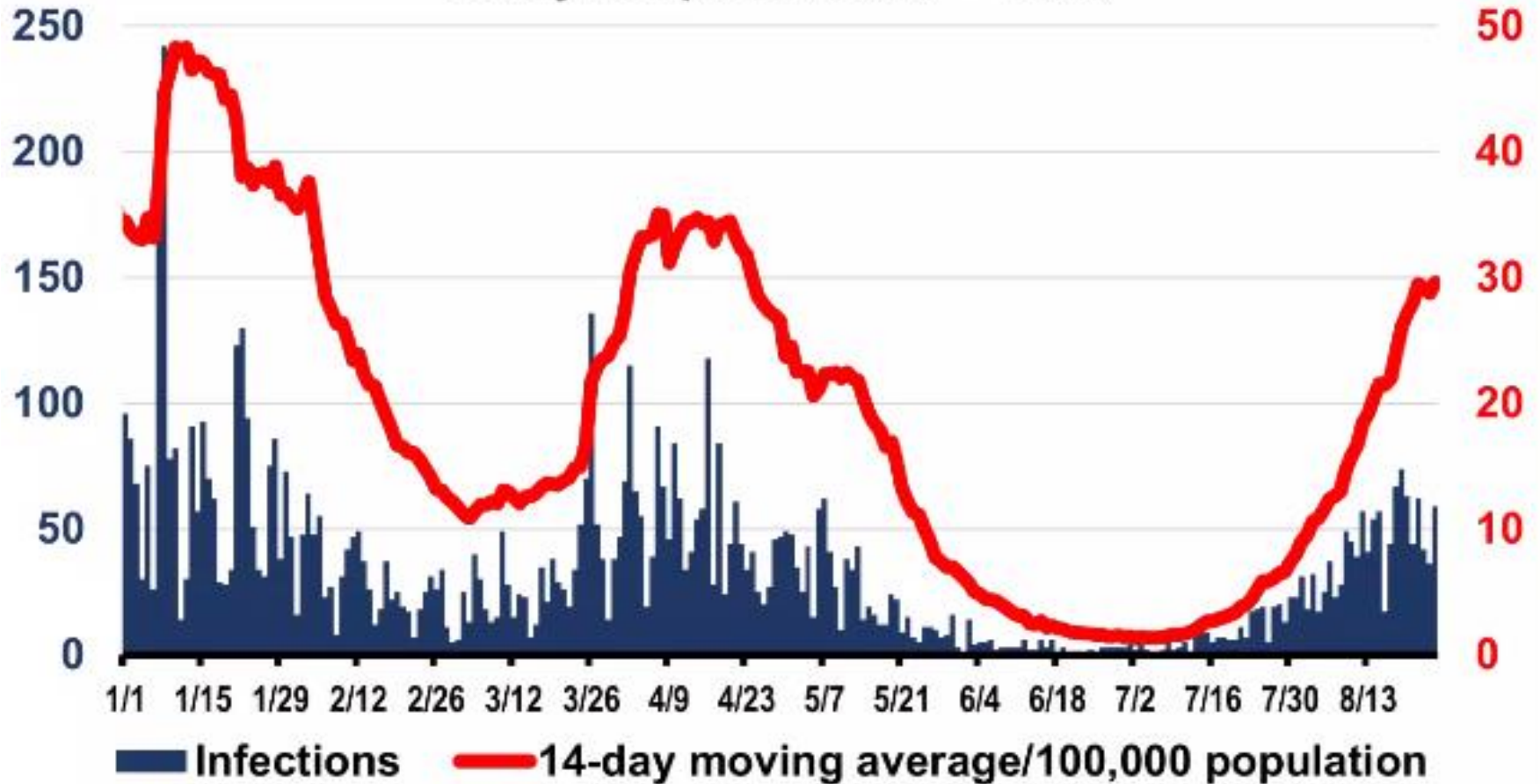


# Infections and 14-day moving average

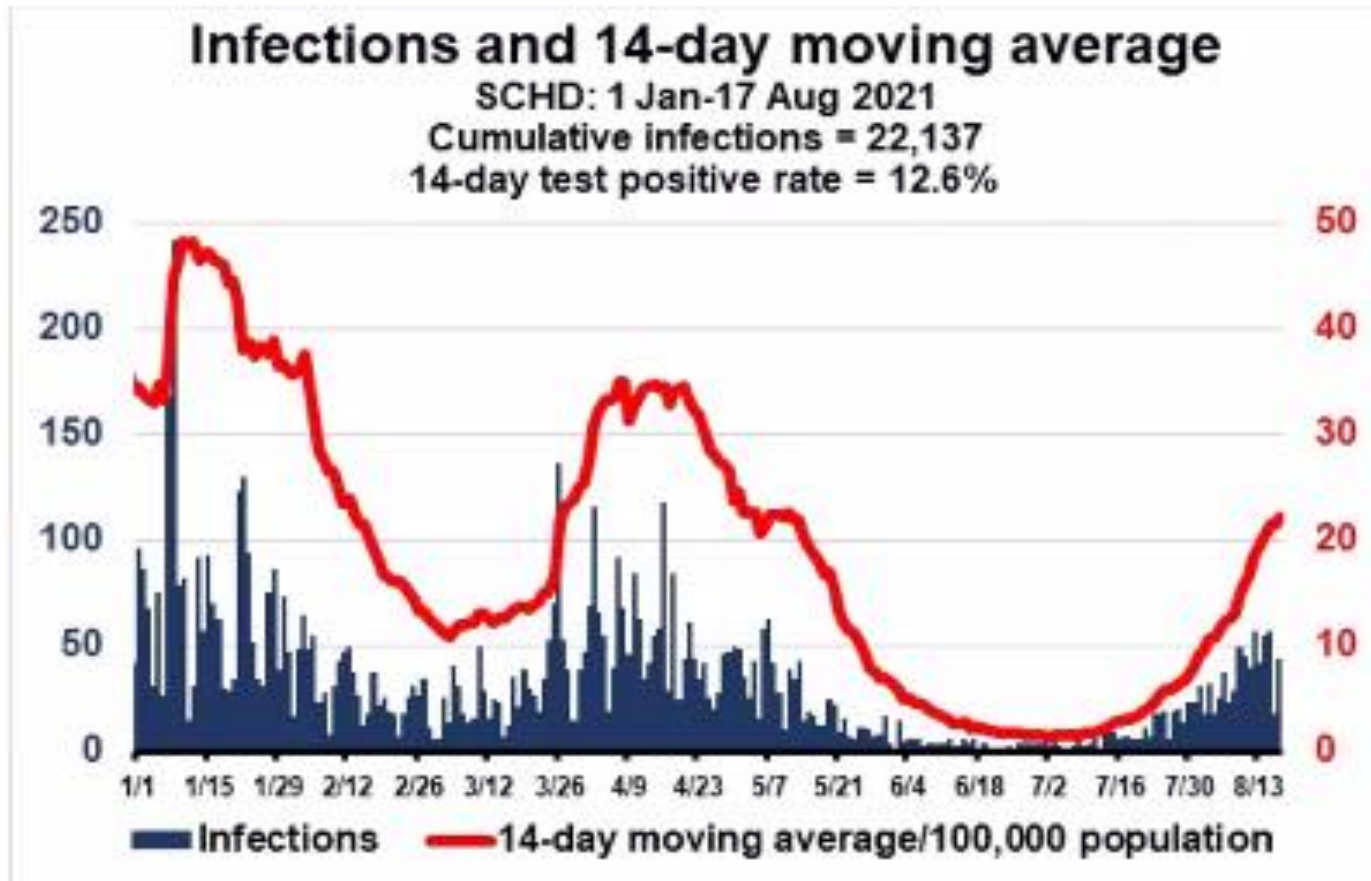
SCHD 1 Jan-25 Aug 2021

Cumulative infections = 22,584

14-day test positive rate = 14.0%



Beginning of 2021-22 school year



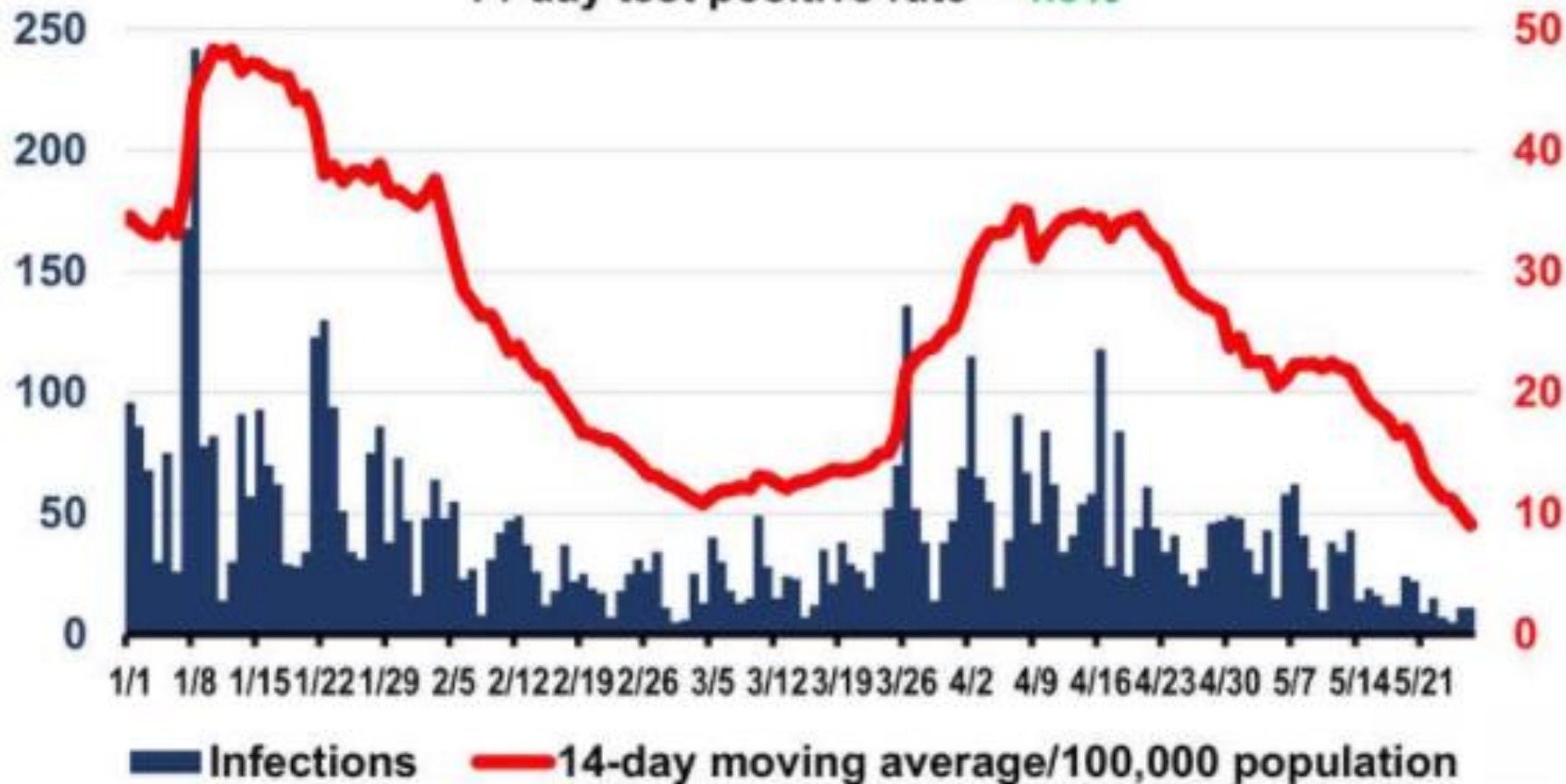
End of 2020-21 school year

# Infections and 14-day moving average

SCHD: 1 Jan - 26 May 2021

Cumulative infections since 21 Mar 2020 = 21,110

14-day test positive rate = 4.5%



**CDC indicators and thresholds for risk of introduction and transmission of COVID-19 in schools**

INDICATORS	Lowest risk of transmission in schools	Lower risk of transmission in schools	Moderate risk of transmission in schools	Higher risk of transmission in schools	Highest risk of transmission in schools
<b>CORE INDICATORS</b>					
Number of new cases per 100,000 persons within the last 14 days*	<3	3 to <20	20 to <50	50 to ≤ 200	>200
Percentage of RT-PCR tests that are positive during the last 14 days**	<3%	3% to <5%	5% to <8%	8% to ≤ 10%	>10%
<p>Ability of the school to implement 5 key mitigation strategies:</p> <ul style="list-style-type: none"> <li>• Consistent and correct use of masks</li> <li>• Social distancing to the largest extent possible</li> <li>• Hand hygiene and respiratory etiquette</li> <li>• Cleaning and disinfection</li> <li>• Contact tracing in collaboration with local health department</li> </ul> <p>Schools should adopt the additional mitigation measures outlined below to the extent possible, practical and feasible.</p>	Implemented all 5 strategies correctly and consistently	Implemented all 5 strategies correctly but inconsistently	Implemented 3-4 strategies correctly and consistently	Implemented 1-2 strategies correctly and consistently	Implemented no strategies
<b>SECONDARY INDICATORS</b>					
Percent change in new cases per 100,000 population during the last 7 days compared with the previous 7 days (negative values indicate improving trends)	<-10%	-10% to <-5%	-5% to <0%	0% to ≤ 10%	>10%
Percentage of hospital inpatient beds in the community that are occupied***	<80%	<80%	80 to 90%	>90%	>90%

The CDC issued new guidance the week of February 7<sup>th</sup>. The information shown here is provided for context.

Percentage of intensive care unit beds in the community that are occupied***	<80%	<80%	80 to 90%	>90%	>90%
Percentage of hospital inpatient beds in the community that are occupied by patients with COVID-19***	<5%	5% to <10%	10% to 15%	>15%	>15%
Existence of localized community/public setting COVID-19 outbreak****	No	No	Yes	Yes	Yes

\*Number of new cases per 100,000 persons within the last 14 days is calculated by adding the number of new cases in the county (or other community type) in the last 14 days divided by the population in the county (or other community type) and multiplying by 100,000.

\*\*Percentage of RT-PCR tests in the community (e.g., county) that are positive during the last 14 days is calculated by dividing the number of positive tests over the last 14 days by the total number of tests resulted over the last 14 days. Diagnostic tests are viral (RT-PCR) diagnostic and screening laboratory tests (excludes antibody testing and RT-PCR testing for surveillance purposes). Learn more on the [Calculating Severe Acute Respiratory Syndrome Coronavirus 2 \(SARS-CoV-2\) Laboratory Test Percent Positivity: CDC Methods and Considerations for Comparisons and Interpretation webpage](#).

Related to CDC Risk of Transmission in Schools

Date	# of New cases per 100,000 within last 14 days	% of RT-PCR positive tests during last 14 days	% change in new cases per 100,000	% hospital inpatient beds that are occupied	% hospital inpatient beds occupied by COVID patients
5/25/20	32				
9/8/20	213		-11.5%		
9/15/20	193		-7%		
9/22/20	250	7.7%	68%	63%	4.3%
9/29/20	290	7.6%	-21%	59%	5.4%
10/6/20	293	7.8%	13%	64%	4.1%
10/13/20	335	8.2%	13%	65%	12%
10/20/20	420	10.1%	22%	71%	10%
10/27/20	565	12.4%	37%	64%	13%
11/4/20	783	16.7%	29%	63%	14%
11/11/20	1,330	23%	78%	74%	25%
11/18/20	1,989	26.2%	13%	77%	33%
11/25/20	1,975	22.4%	-24%	70%	30%
12/2/20	1,379	19.3%	-43%	67%	23%
12/9/20	1,033	18.9%	0.19%	70%	18%
12/15/20	927	16.7%	-24%	67%	19%
12/23/20	705	14.8	-29%	65%	15%
12/30/20	468	12.5	-40%	60%	12%

Related to CDC Risk of Transmission in Schools

Date	# of New cases per 100,000 within last 14 days	% of RT-PCR positive tests during last 14 days	% change in new cases per 100,000	% hospital inpatient beds that are occupied	% hospital inpatient beds occupied by COVID patients
1/6/21	477	15.4%	67%	60%	12%
1/13/21	628	14.4%	-7%	63%	9.5%
1/20/21	541	12.5%	-25%	71%	8%
1/27/21	474	13%	0%	66%	15%
2/3/21	456	12.1%	-12%	67%	12%
2/10/21	363	10.3%	-32%	68%	9.5%
2/17/21	283	8.8%	-8%	71%	6.7%
2/24/21	218	7.1%	-40%	62%	5.5%
3/3/21	158	5.2%	-33%	66%	3.2%
3/10/21	164	6.1%	59%	64%	4%
3/17/21	182	4.4%	-2%	67%	3.2%
3/24/21	208	8%	31%	64%	3%
3/31/21	305	9.5%	56%	71%	6.3%
4/7/21	409	11.4%	20%	65%	11%
4/14/21	484	10.9%	16%	68%	11%
4/21/21	491	9.3%	-12%	62%	7.3%
4/28/21	372	7%	-39%	65%	5.3%
5/5/21	309	7.1%	17%	66%	6.5%

Related to CDC Risk of Transmission in Schools

Date	# of New cases per 100,000 within last 14 days	% of RT-PCR positive tests during last 14 days	% change in new cases per 100,000	% hospital inpatient beds that are occupied	% hospital inpatient beds occupied by COVID patients
5/12/21	309	6.6%	--16%	63%	6.1%
5/19/21	231	5%	-41%	73%	6.5%
5/26/21	137	3.3%	-41%	68%	4.7%
6/2/21	88	2.6%	-27%	61%	2.8%
6/9/21	52	1.6%	-59%	70%	1.2%
6/16/21	28	1.2%	-54%	71%	0.9%
6/23/21	25	1%	-8%	68%	0.3%
6/30/21	20	1.6%	-33%	70%	0.6%
7/7/21	17	1.5%	13%	60%	1.4%
7/14/21	25	1.6%	78%	69%	0.9%
7/28/21	86	7.5%	77%	69%	3.1%
8/4/21	145	10.1%	59%	76%	4.0%
8/11/21	231	7.7	29%	78%	7.8%
8/18/21	243	13.3%	48%	72%	9.1%

Related to CDC Risk of Transmission in Schools

Date	# of New cases per 100,000 within last 14 days	% of RT-PCR positive tests during last 14 days	% change in new cases per 100,000	% hospital inpatient beds that are occupied	% hospital inpatient beds occupied by COVID patients
8/25/21	419	14%	12%	74%	11.7%
9/1/21	446	13.1%	-9%	81%	6.8%
9/8/21	439	11.2%	0.46%	68%	10.3%
9/15/21	439	10.5%	-6%	70%	12.2%
9/22/21	518	11.7%	19%	75%	11.1%
9/29/21	496	9.1%	-33%	70%	11.8%
10/6/2020	420	10.7%	1%	75%	8.8%
10/13/21	362	10.1%	-31%	67%	8.2%
10/20/21	314	10.2%	8%	75%	7%
10/27/2021	302	9.6%	-16%	75%	7%
11/3/2021	270	8.8%	-15%	71%	7.3%

# CDC Indicators of Community Transmission in Relation to Schools

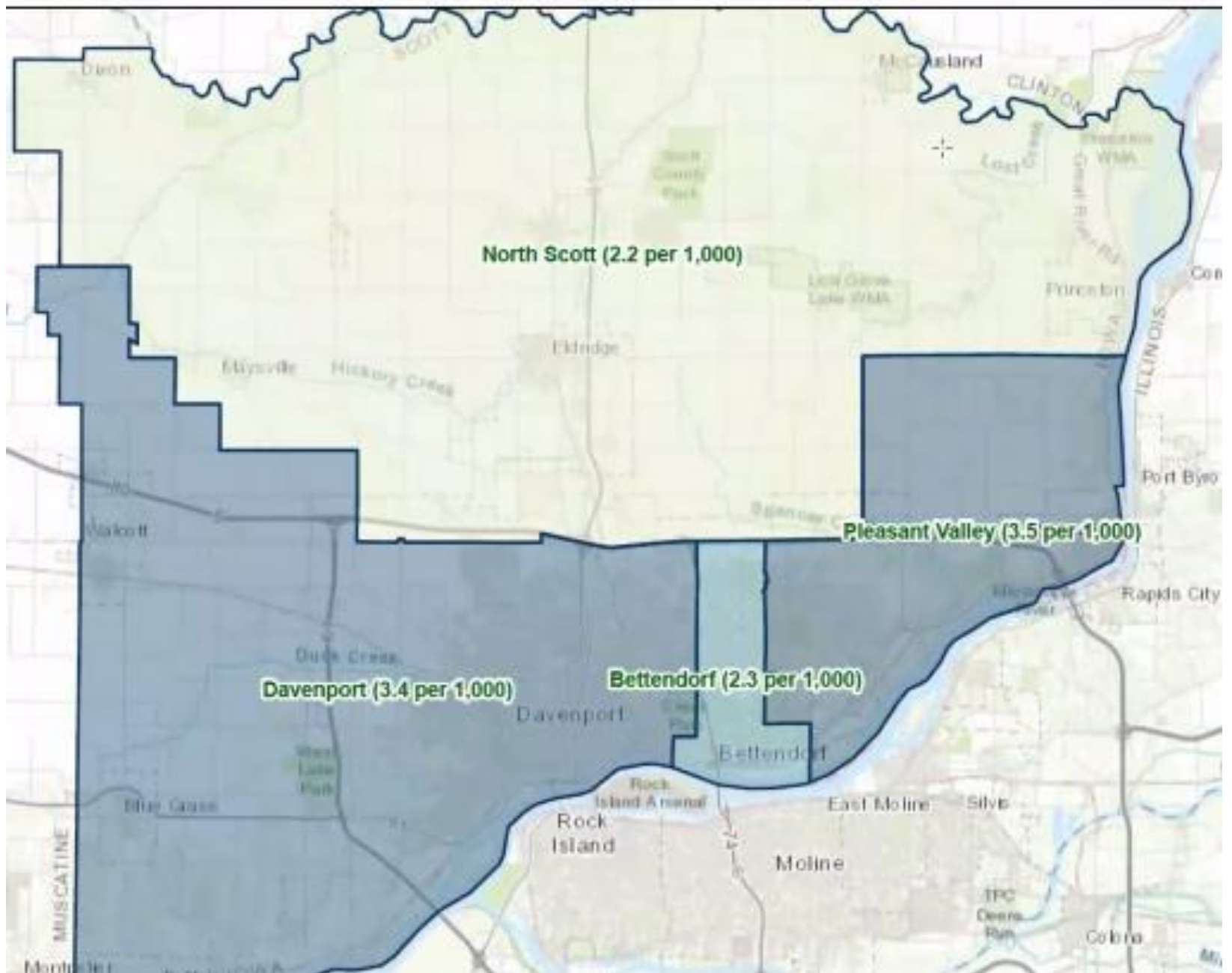
Updated February 7, 2021

Indicator	Low Transmission Blue	Moderate Transmission Yellow	Substantial Transmission Orange	High Transmission Red
Total new cases per 100,000 persons in the past 7 days	0-9	10-49	50-99	$\geq 100$
Percentage of NAATs that are positive during the past 7 days	$< 5.0\%$	5.0%-7.9%	8.0%-9.9%	$\geq 10\%$

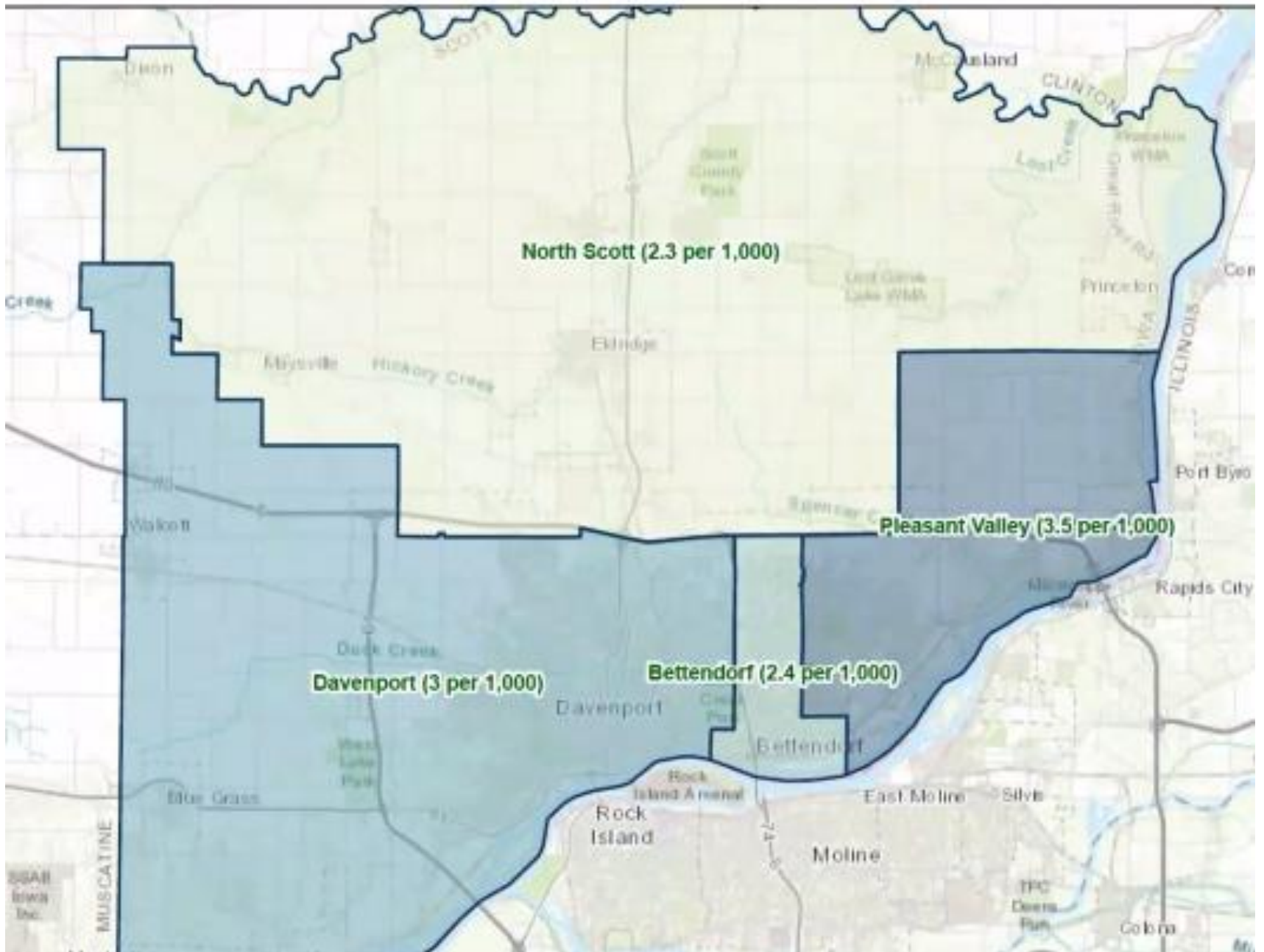
Date	Total New Cases Per 100,000 in Past 7 Days	Percent of RT-PCR tests that are positive during the last 7 days
2/17/21	136	7.8%
2/24/21	82	4%
3/3/21	58	3.1%
3/10/21	92	5.2%
3/17/21	90	4.2%
3/24/21	118	8%
3/31/21	186	10.4%
4/7/21	223	11.6%
4/14/21	260	10.7%
4/21/21	230	7.6%
4/28/21	141	6.3%
5/5/21	167	6.8%
5/12/21	141	6%
5/19/21	86	3.7%
5/29/21	51	2.5%

Date	Total New Cases Per 100,000 in Past 7 Days	Percent of RT-PCR tests that are positive during the last 7 days
6/2/21	37	2.7%
6/9/21	15	1.1%
6/16/21	13	1.5%
6/23/21	12	0.4%
6/30/21	8	1.5%
7/7/21	9	1.5%
7/14/21	16	1.3%
7/28/21	55	7.4%
8/4/21	89	9.3%
8/11/21	130	8.7%
8/18/21	195	13.4%
8/25/21	225	11.3%
9/1/21	212	10.4%
9/8/21	220	11.2%
9/15/21	213	9.6%
9/22/21	282	10.2%
9/29/21	199	9.7%

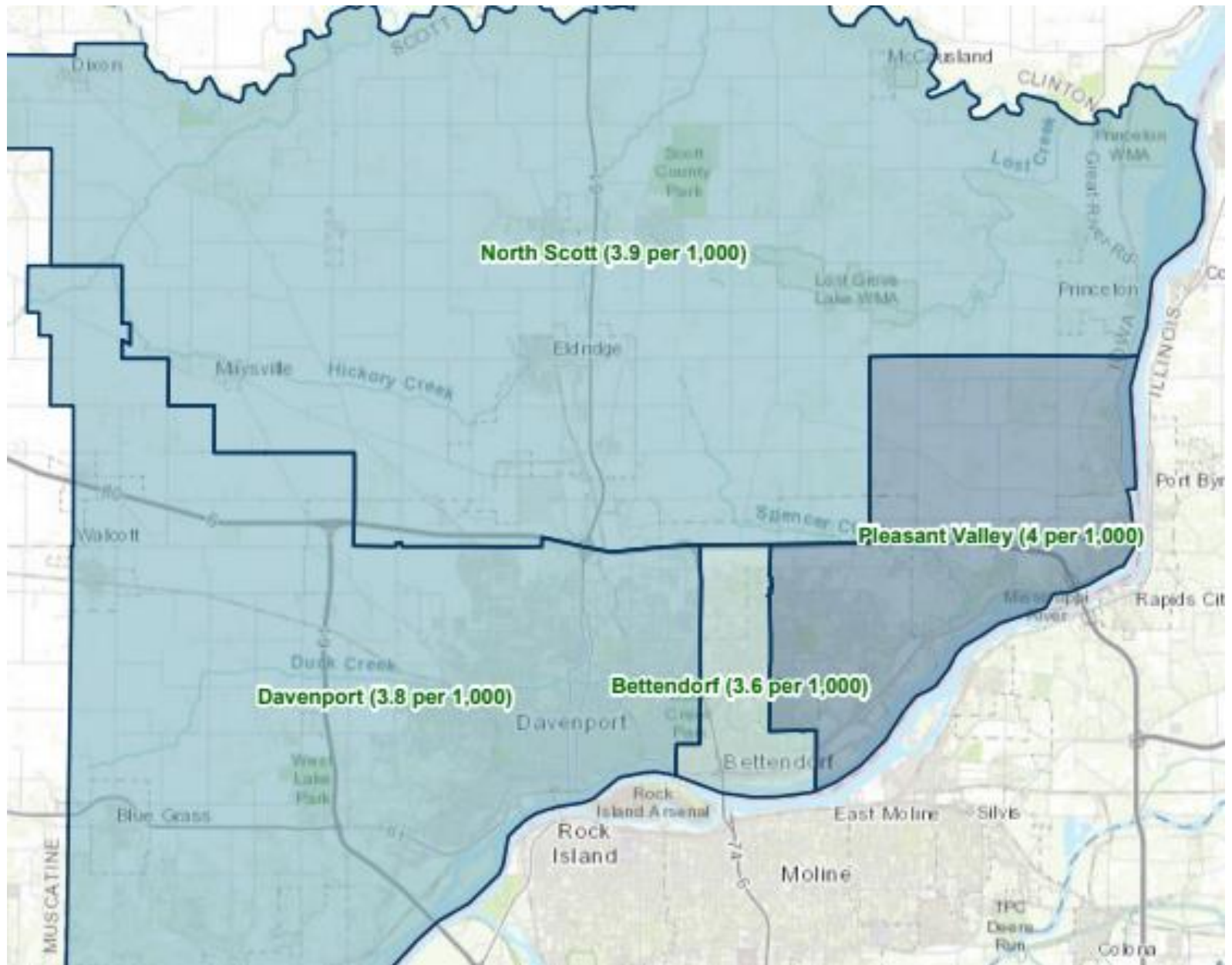
Date	Total New Cases Per 100,000 in Past 7 Days	Percent of RT-PCR tests that are positive during the last 7 days
10/6/2021	211	9.2%
10/13/21	148	8.6%
10/20/21	163	8.8%
10/27/2021	138	8.7%
11/3/2021	124	6.8%



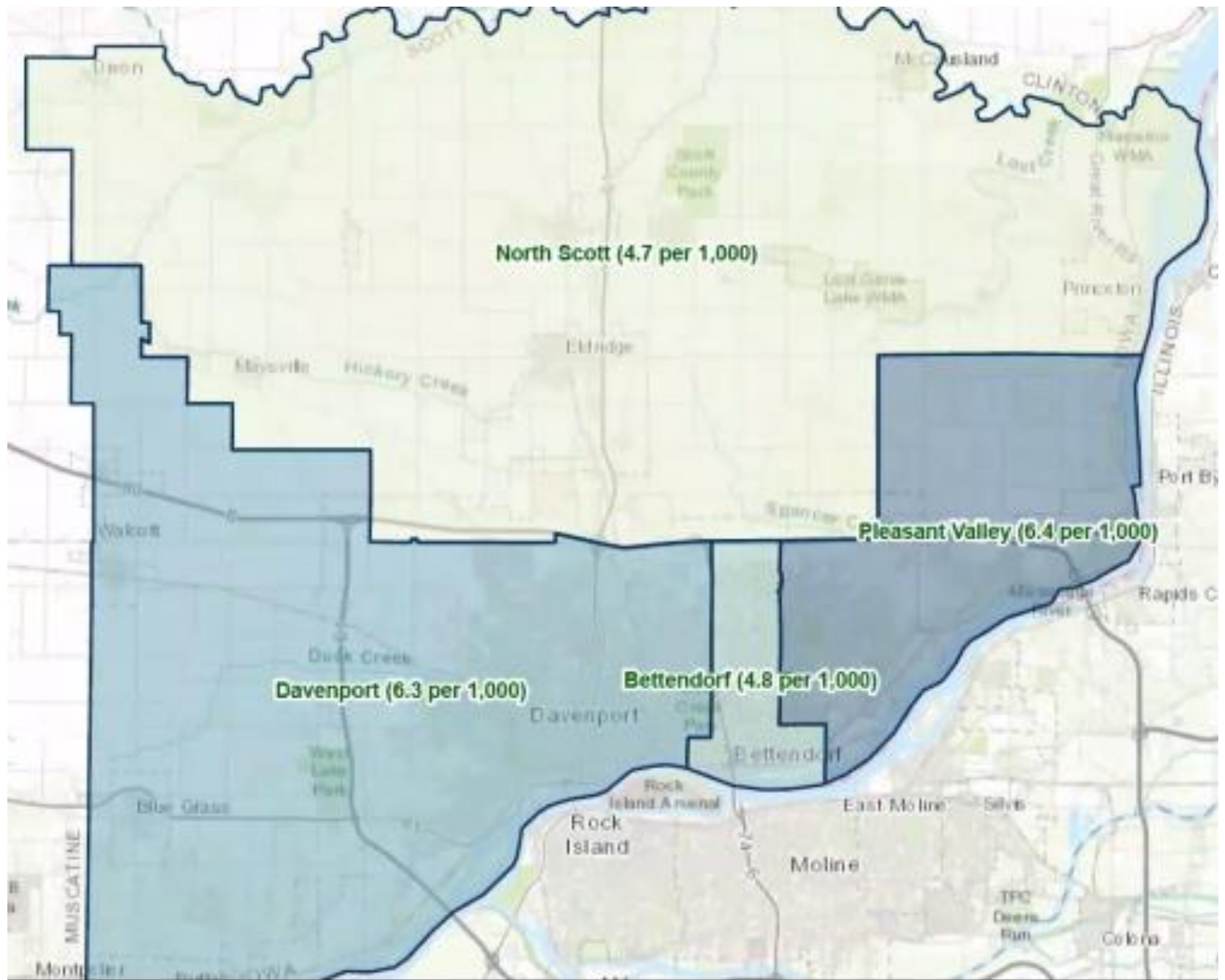
Nov 3, 2021



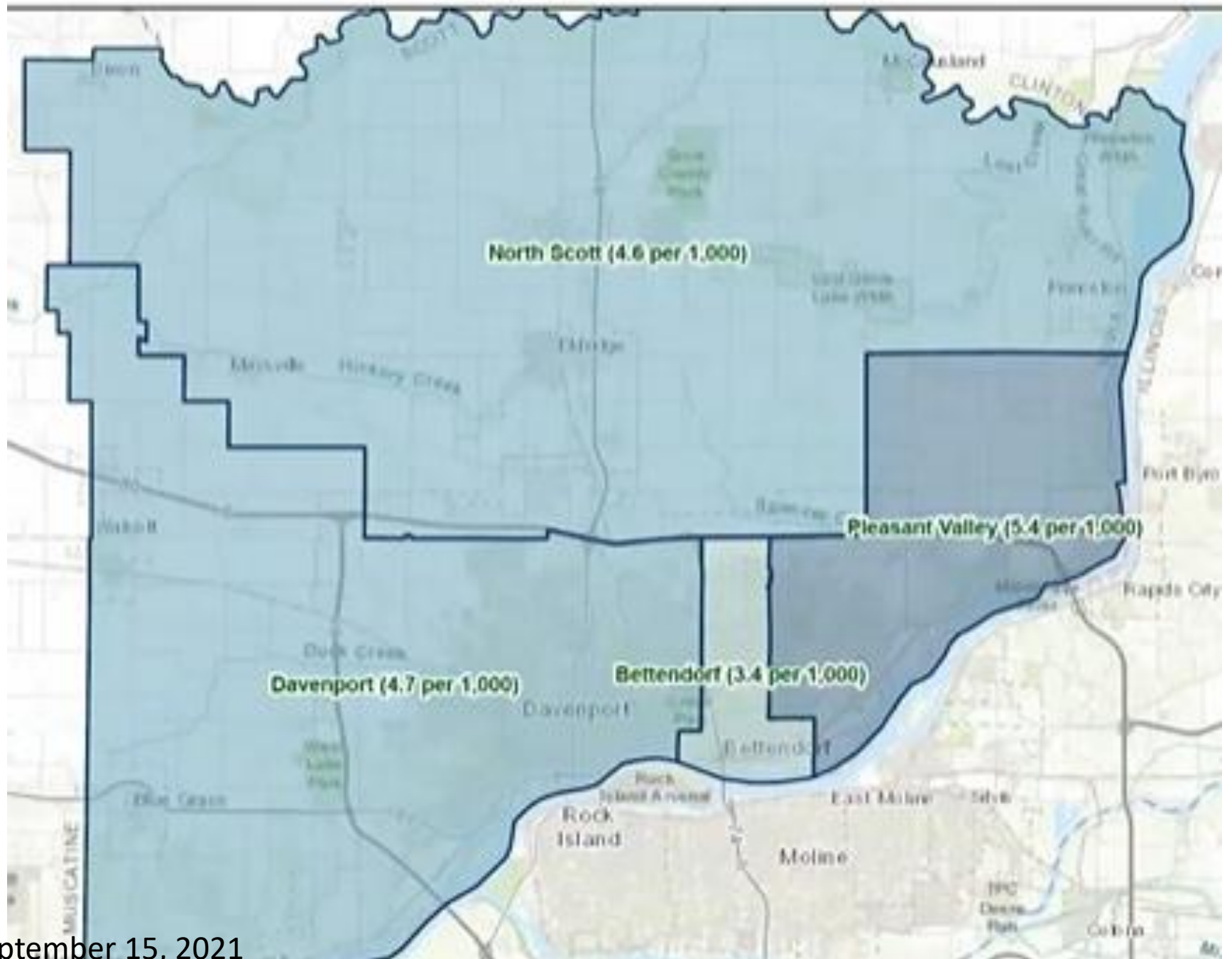
October 27, 2021



Oct 13, 2021

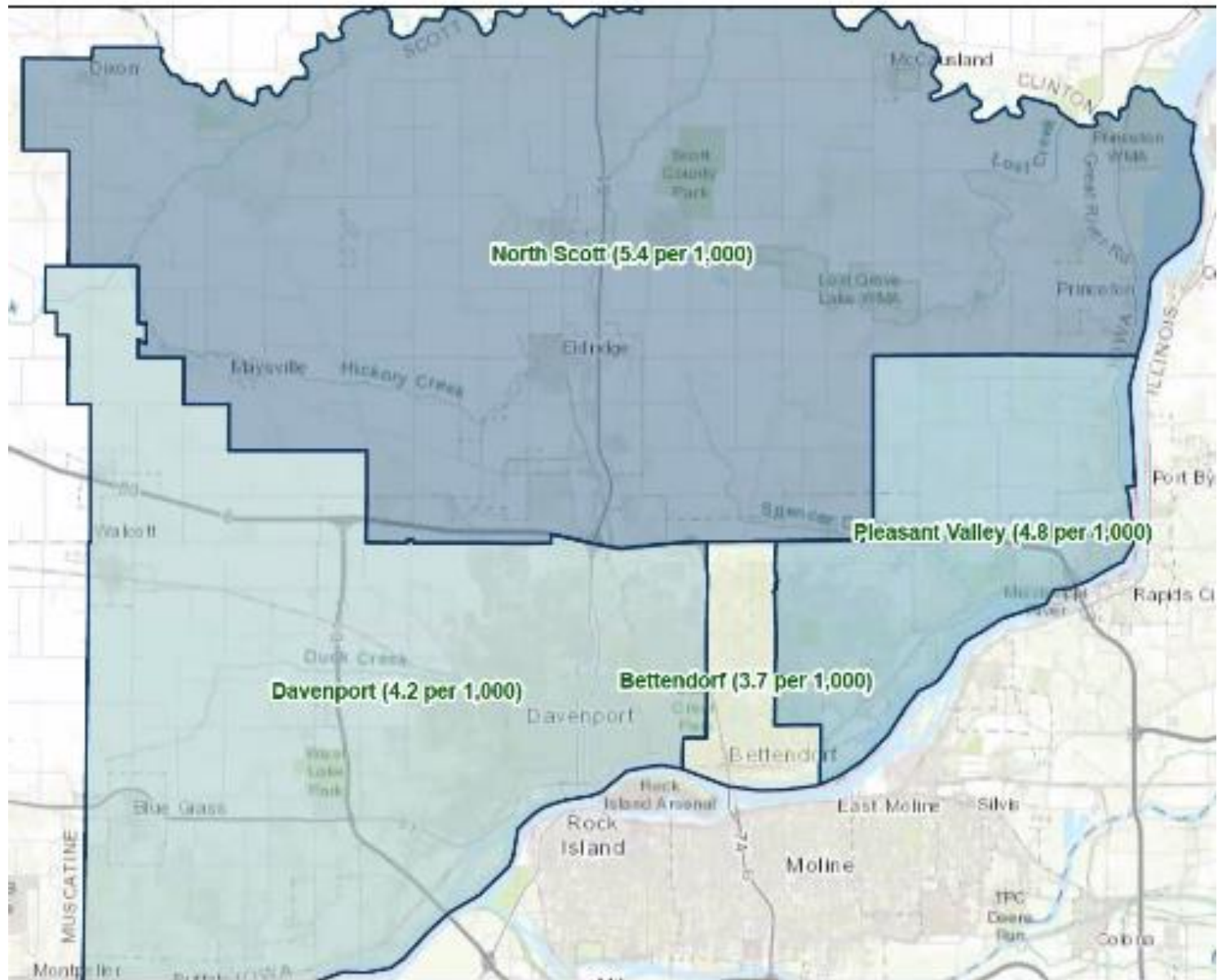


September 29, 2021



September 15, 2021

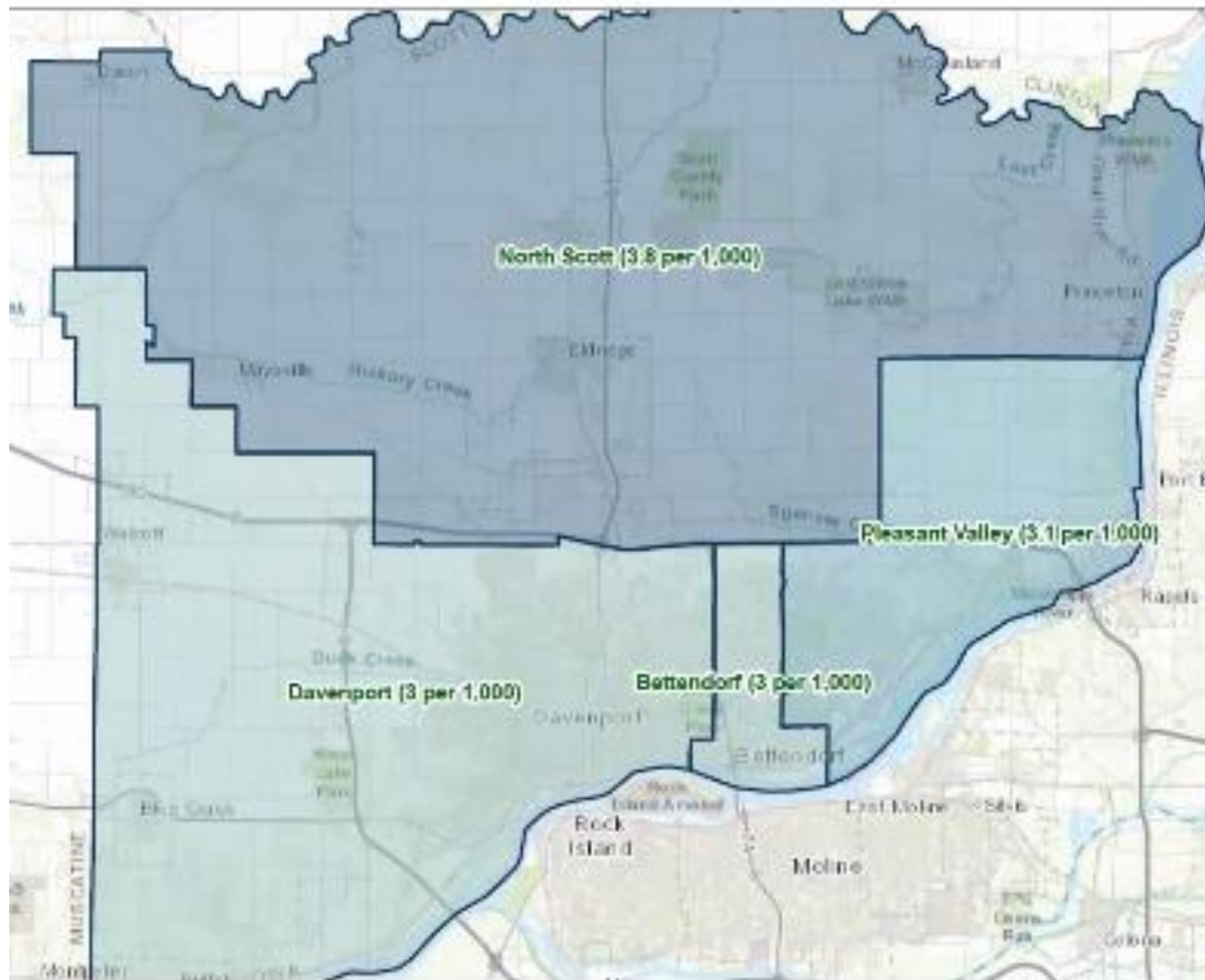
# ARCGIS Web Map



August 25, 2021

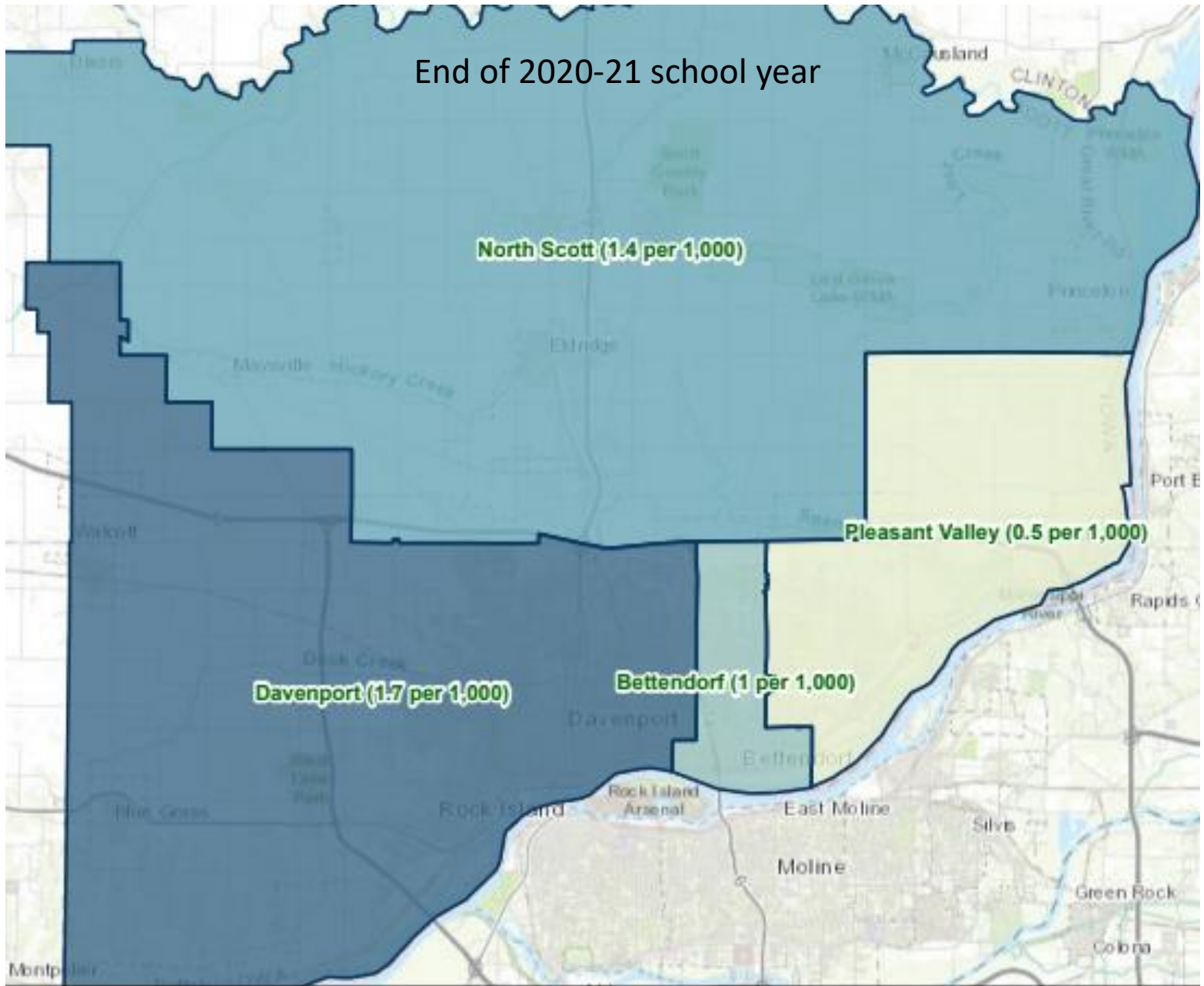
# Beginning of 2021-22 school year

## ArcGIS Web Map



1:200,000

End of 2020-21 school year

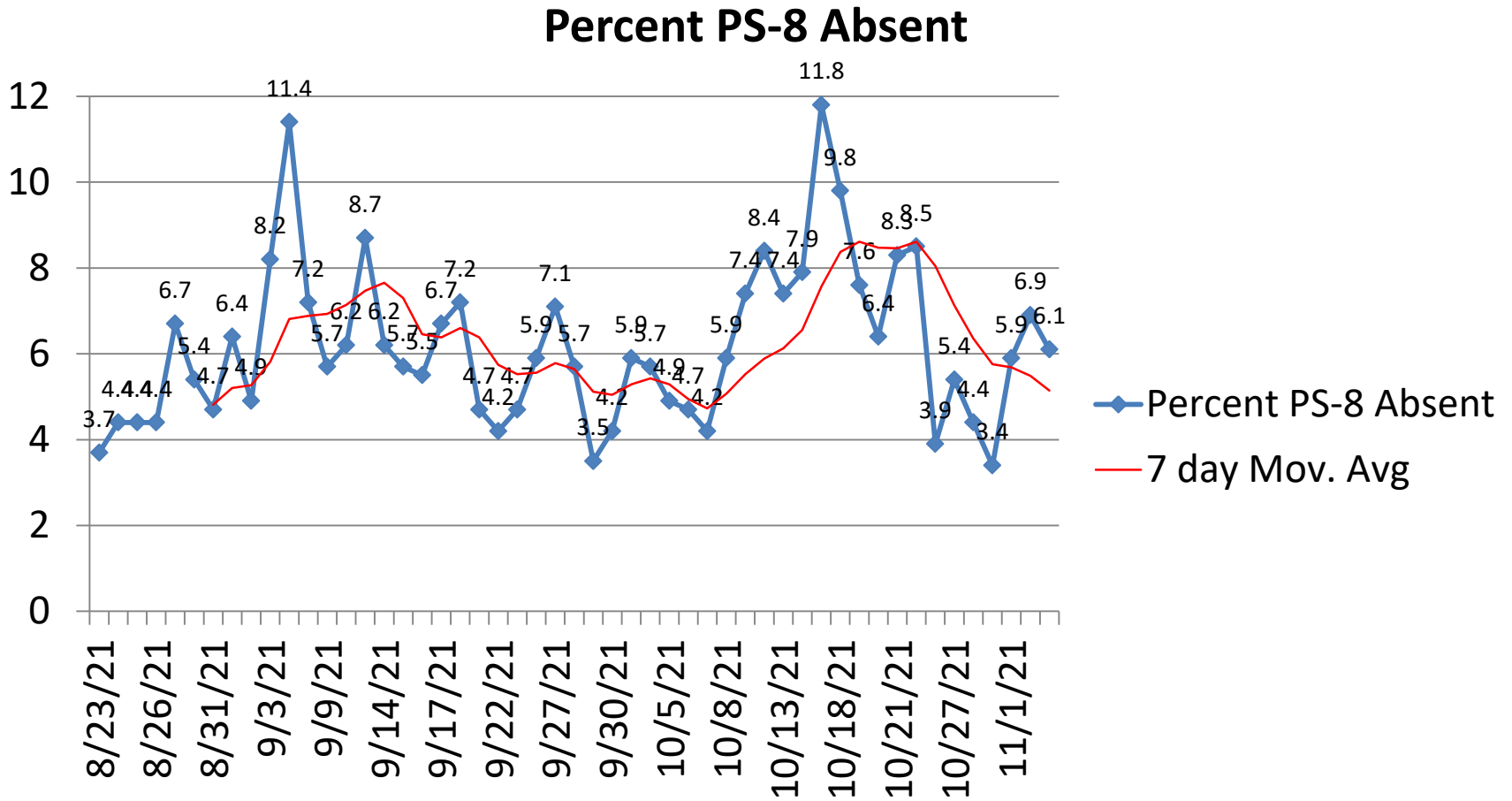


5/26/2021

# JFK Data

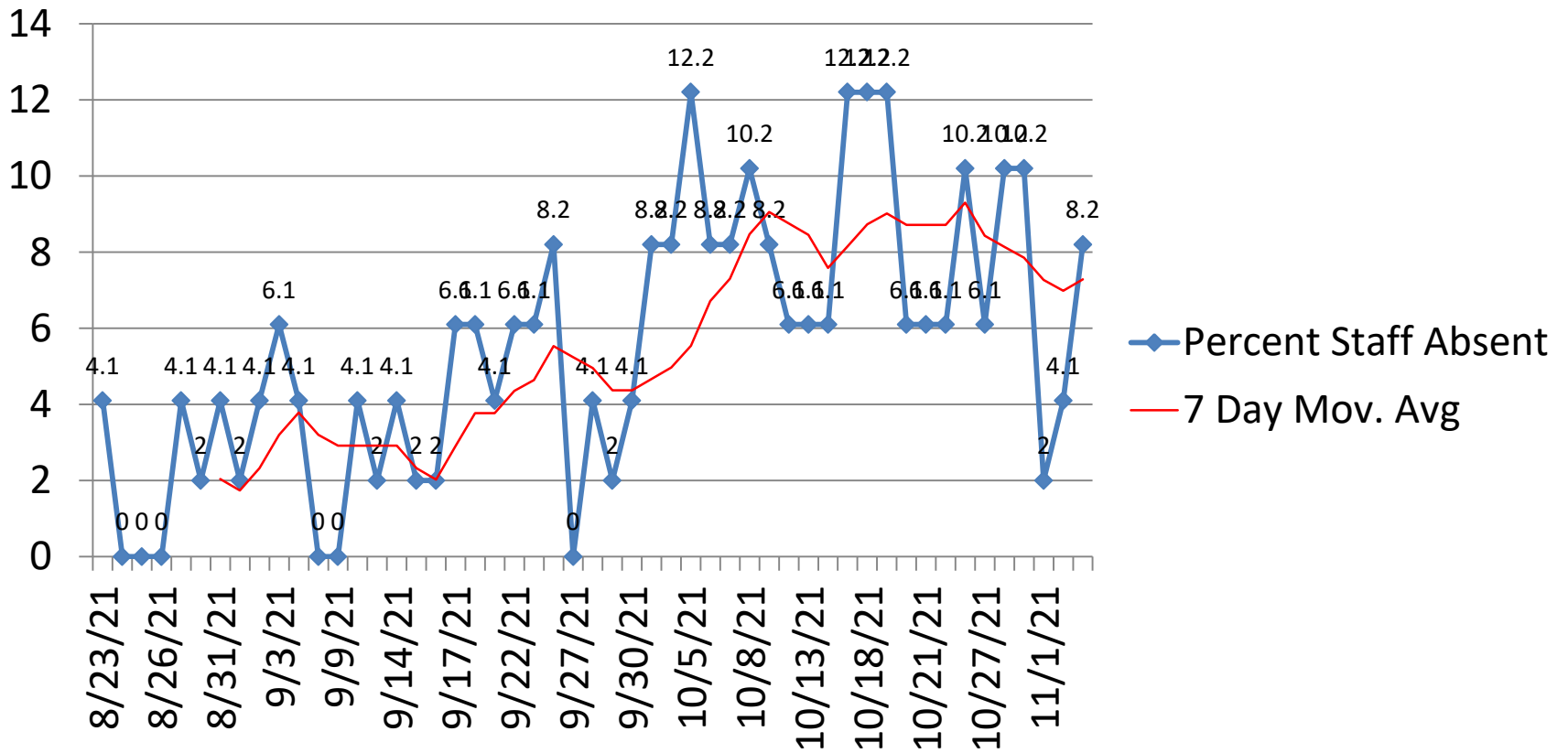
Includes 3 Yr Old PS-8<sup>th</sup> Grade  
Students and All Staff

# Percent of PS-8 Students Absent



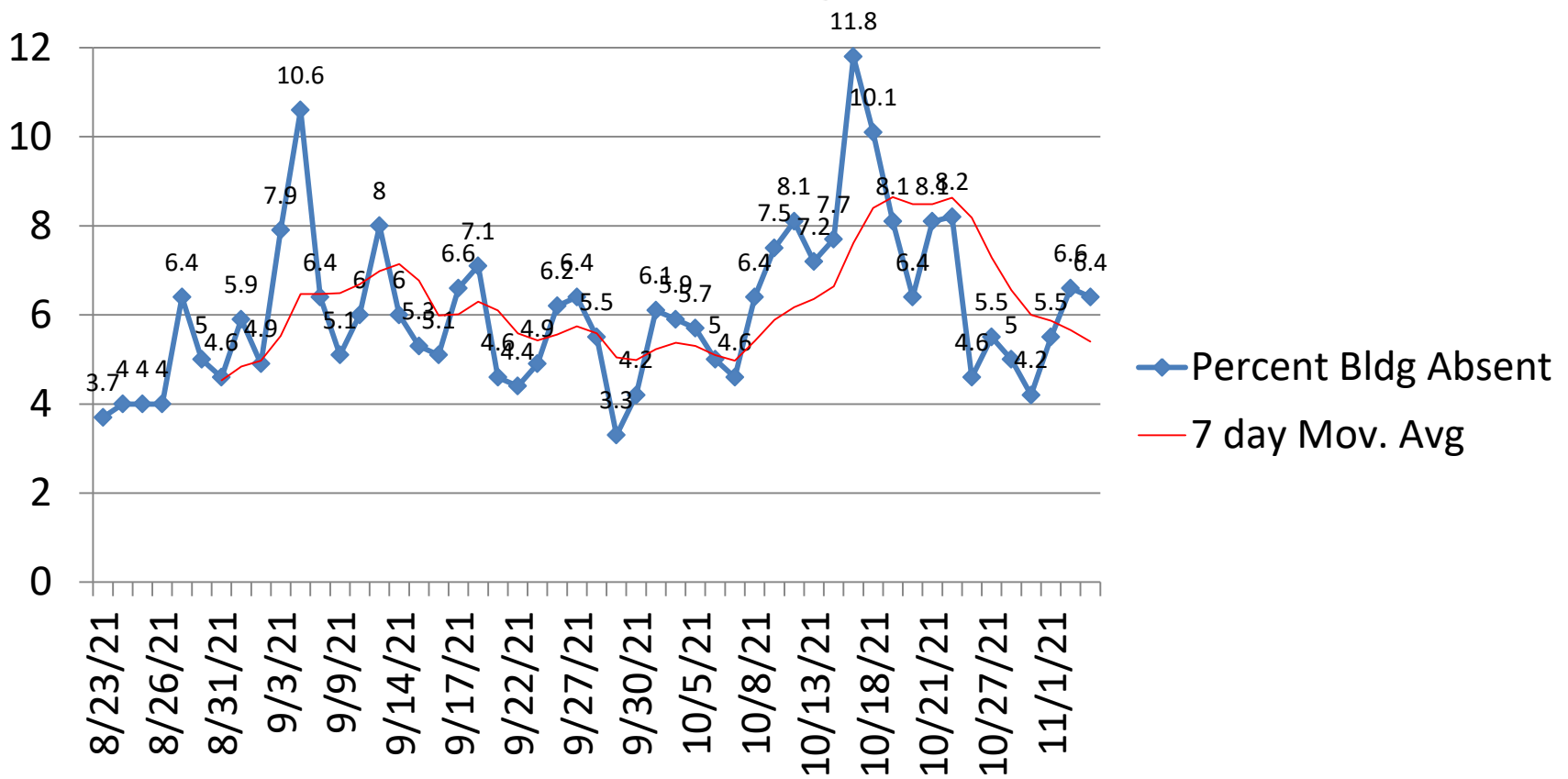
# Percent of Staff Absent

## Percent Staff Absent

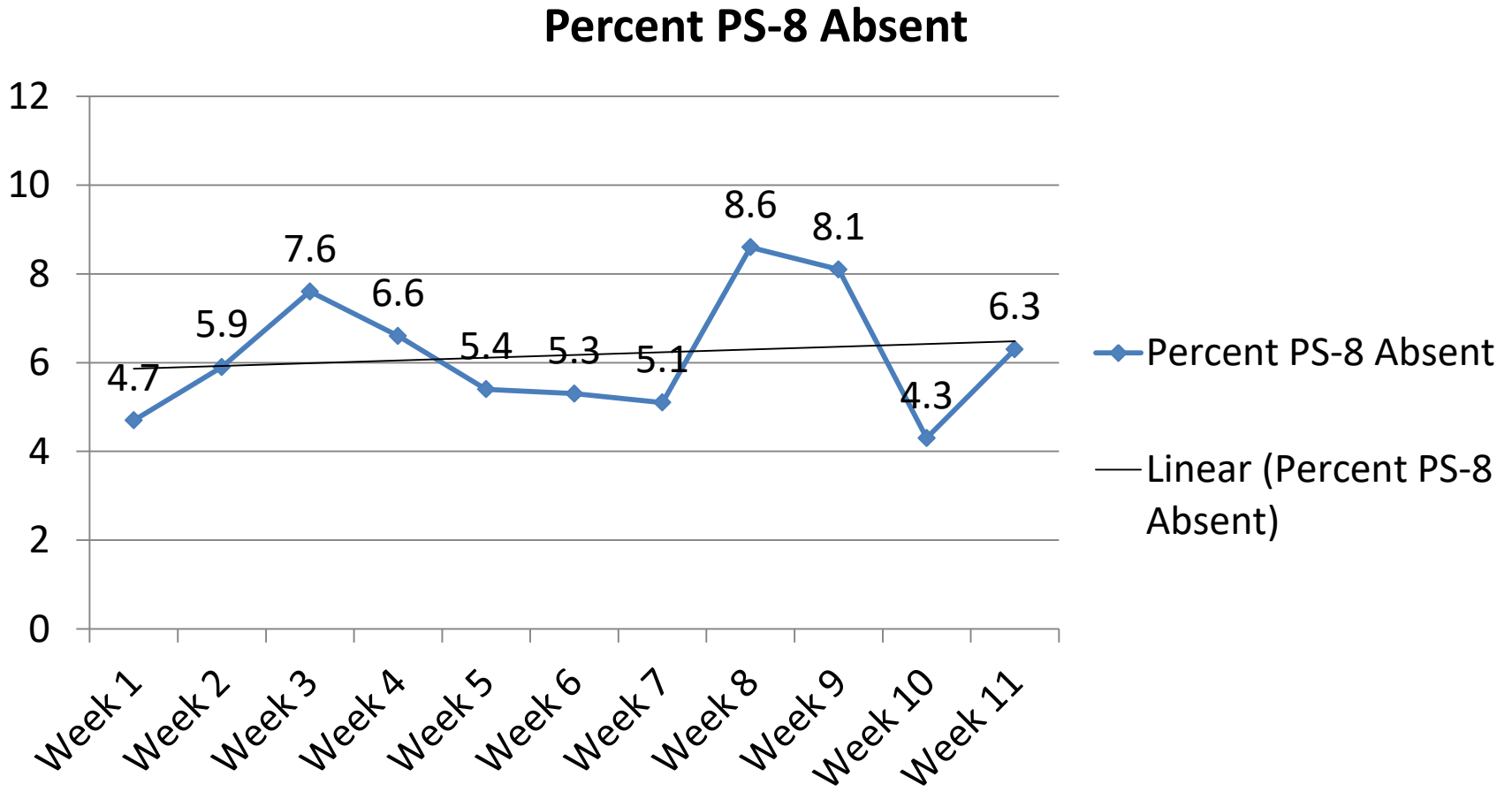


# Percent of PS-8 Students & Staff Absent

## Percent Bldg Absent

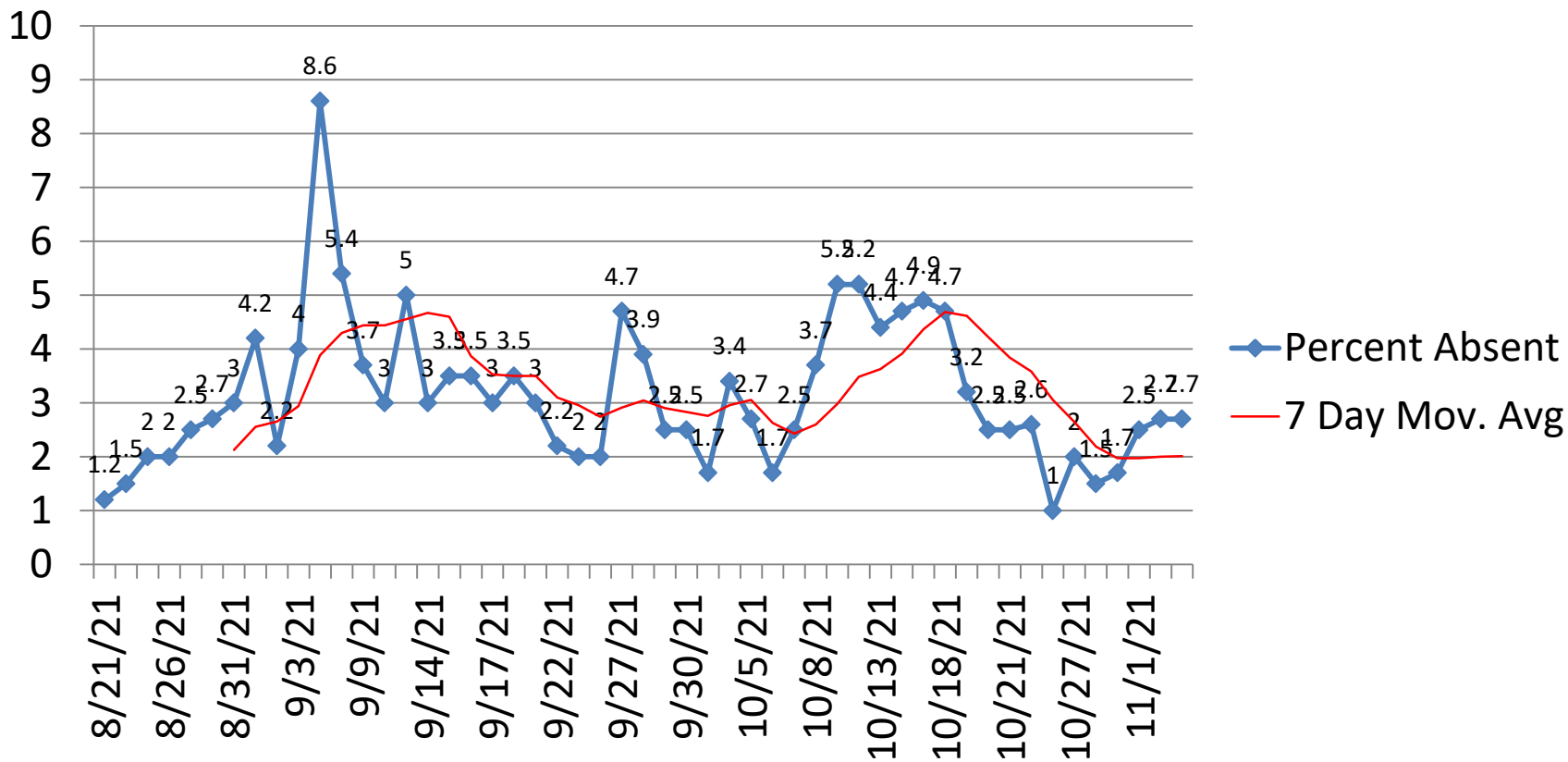


# Percent of PS-8 Students Absent by Week



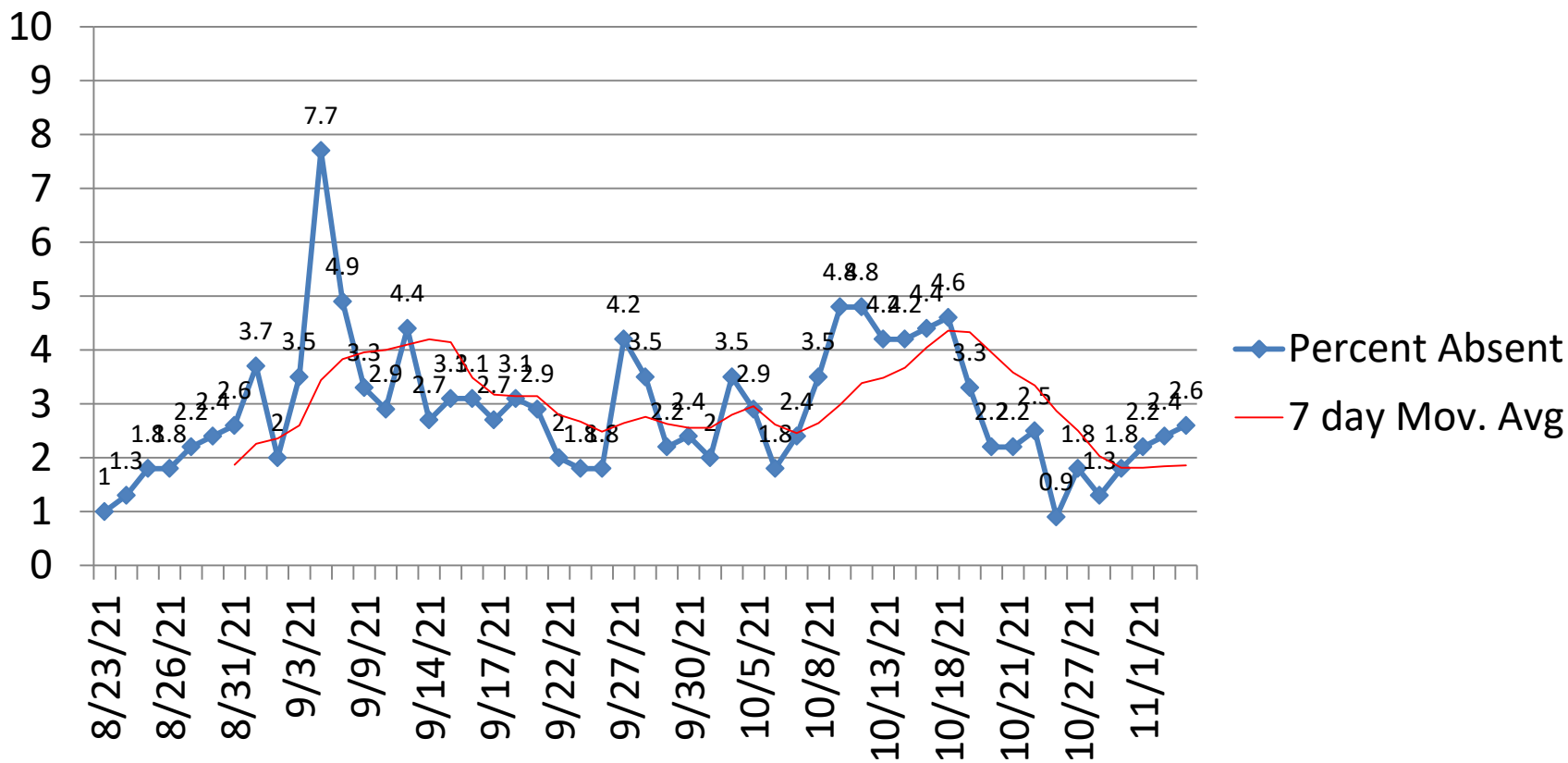
# Percent of PS-8 Students Absent due to Illness, including COVID

## Percent Absent

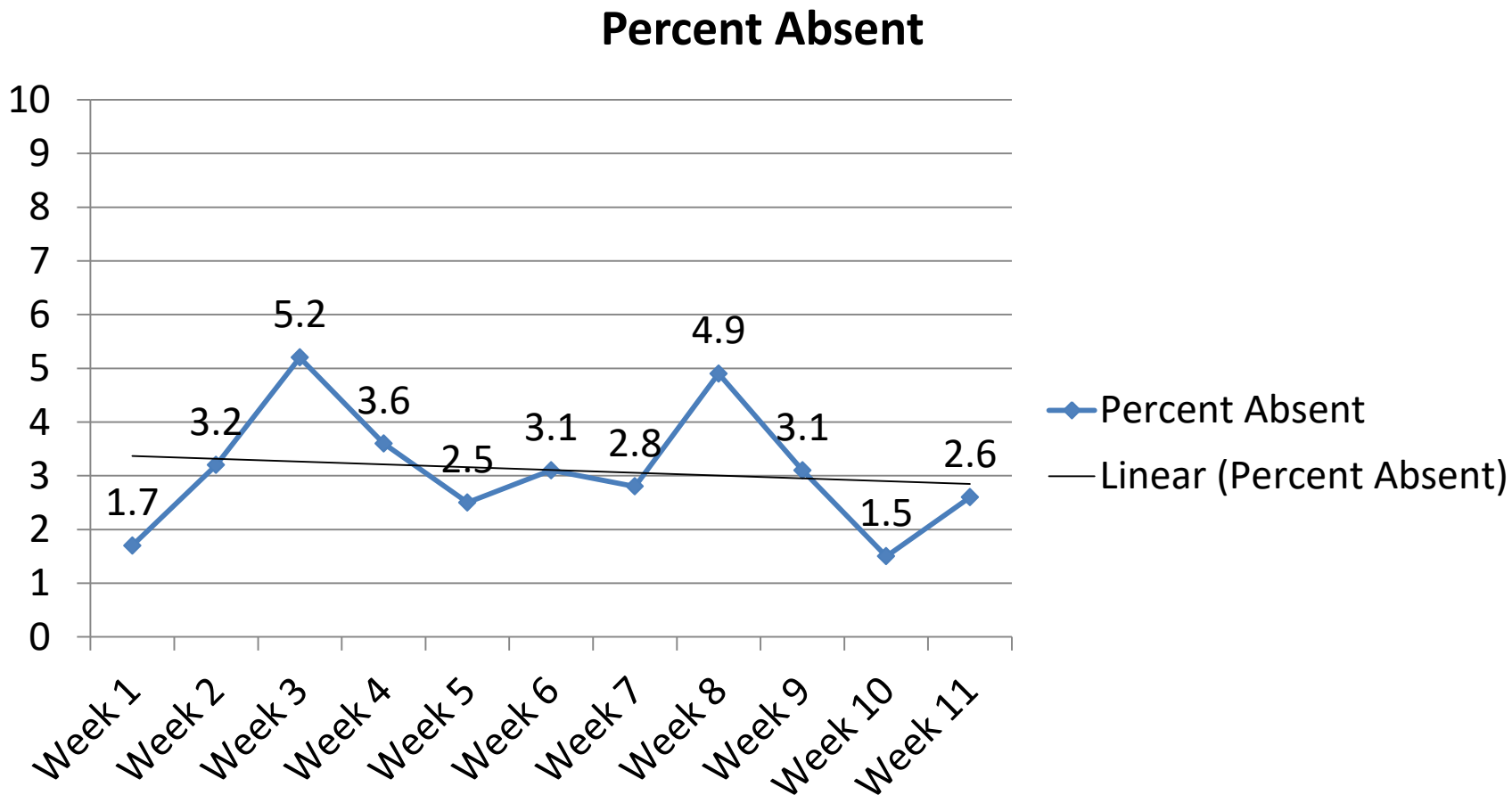


# Percent of PS-8 Students & Staff Absent due to Illness, including COVID

## Percent Absent

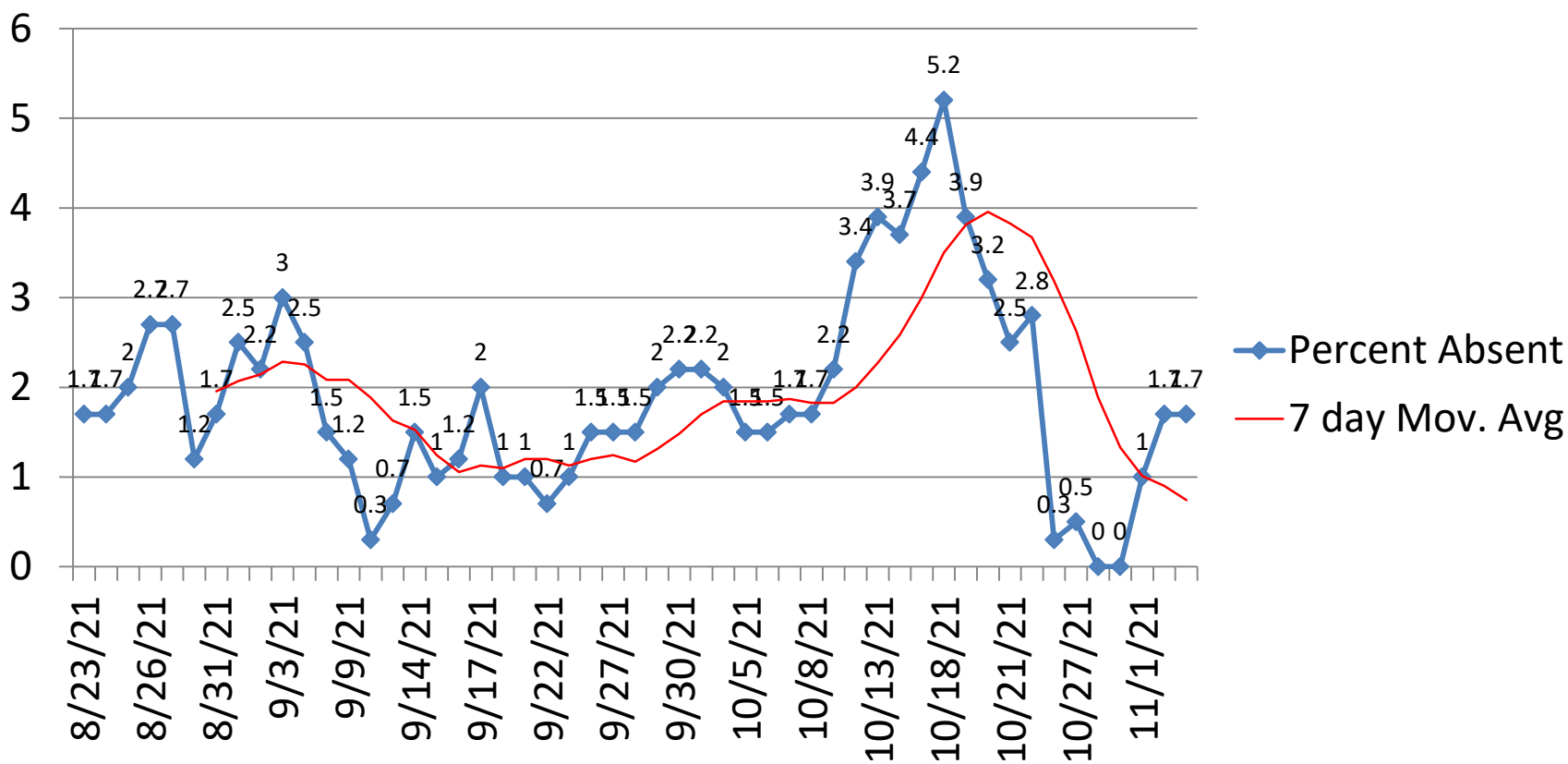


# Percent of PS-8 Students Absent due to Illness, including COVID by Week



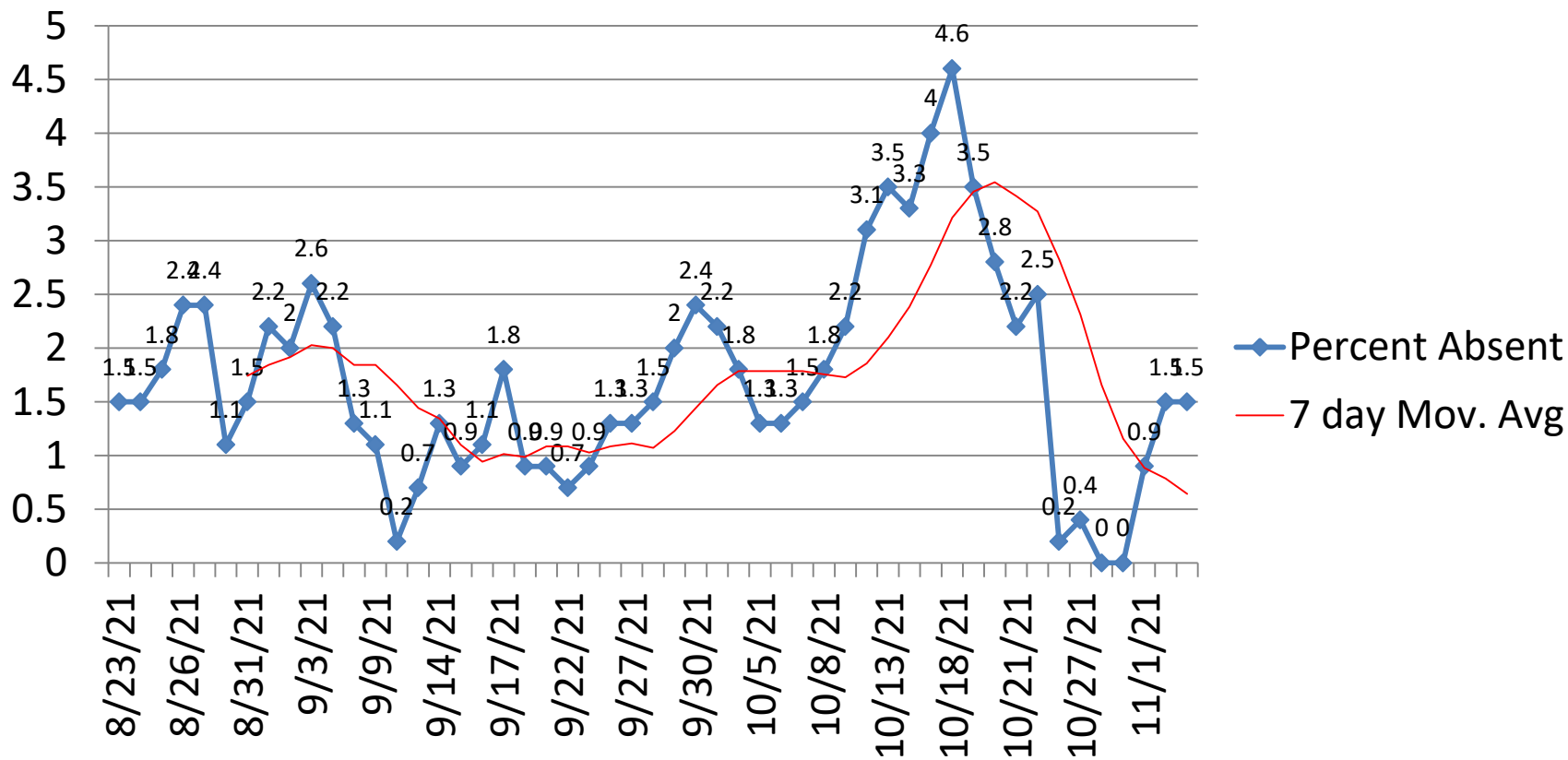
# Percent of PS-8 Students Absent due to Positive COVID Test, COVID Symptoms, or Quarantining as Close Contact

## Percent Absent



# Percent of PS-8 Students & Staff Absent due to Positive COVID Test, COVID Symptoms, or Quarantining as Close Contact

## Percent Absent



# Percent of PS-8 Students Absent due to Positive COVID Test, COVID Symptoms, or Quarantining as Close Contact by Week

